

Side Bed Cover Replacement



**** CAUTION ****

Always turn the power switch to the off position. Unplug the treadmill power cord from the power outlet.

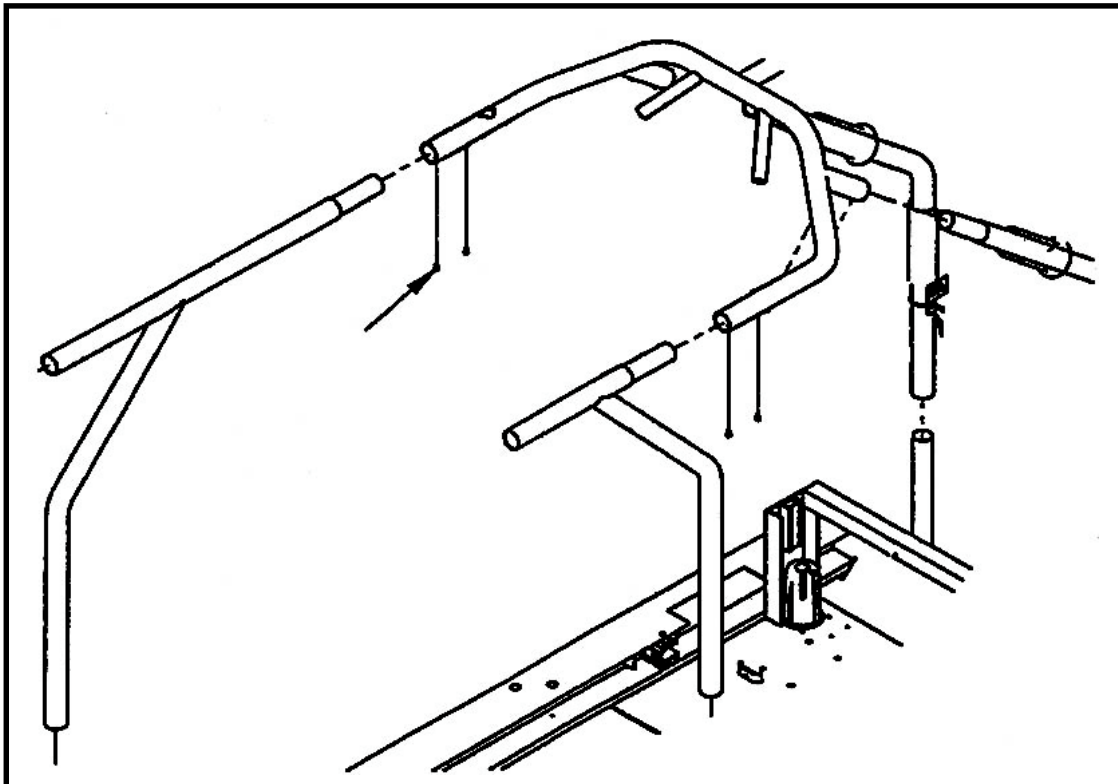
Tools:

- Side bed cover
- Philips-head screwdriver
- Slot-head screwdriver
- 1/8-in Allen wrench
- 5/8-in socket and socket wrench with ratchet
- Plastic-head hammer
- Wooden block

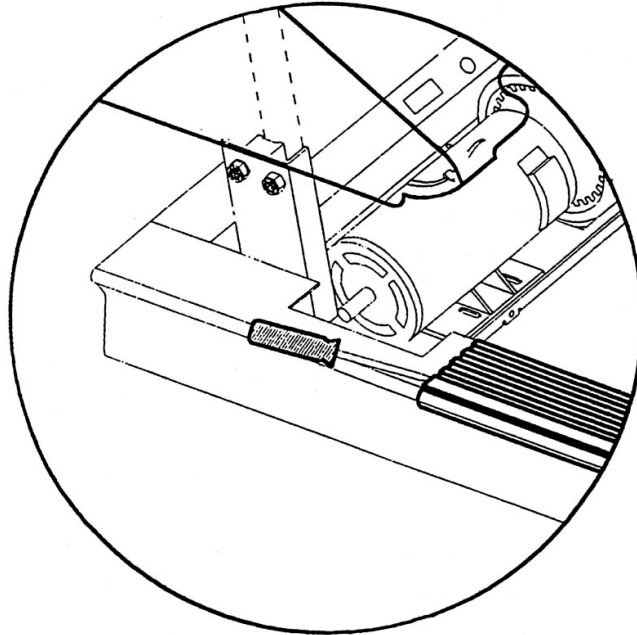
Procedure: Removing the Side Bed Cover.

1. Remove the 5/8-in. hex-head screw at the bottom of the frame and inline with the bottom end of the vertical section of the handrail. **See Diagram A.**
2. Lift the bottom of the vertical section of the handrail to clear the side bed cover and pull it to the side of the frame only far enough to clear the side bed cover.
3. Slip a screwdriver under the front end of the side bed cover, near the outside edge and pry the edge upwards until the outer flange is clear of the frame. **See Diagram B.**

Diagram A



Side Bed Cover Replacement



4. Starting at the raised corner of the flange, lift upwards and outwards to free its outer edge from the frame along its length.
5. Lifting the outer edge of the cover, push the cover towards the center of the treadmill to clear the cover's inner flange from the frame and remove from the treadmill.

Installing Replacement Side Bed Cover

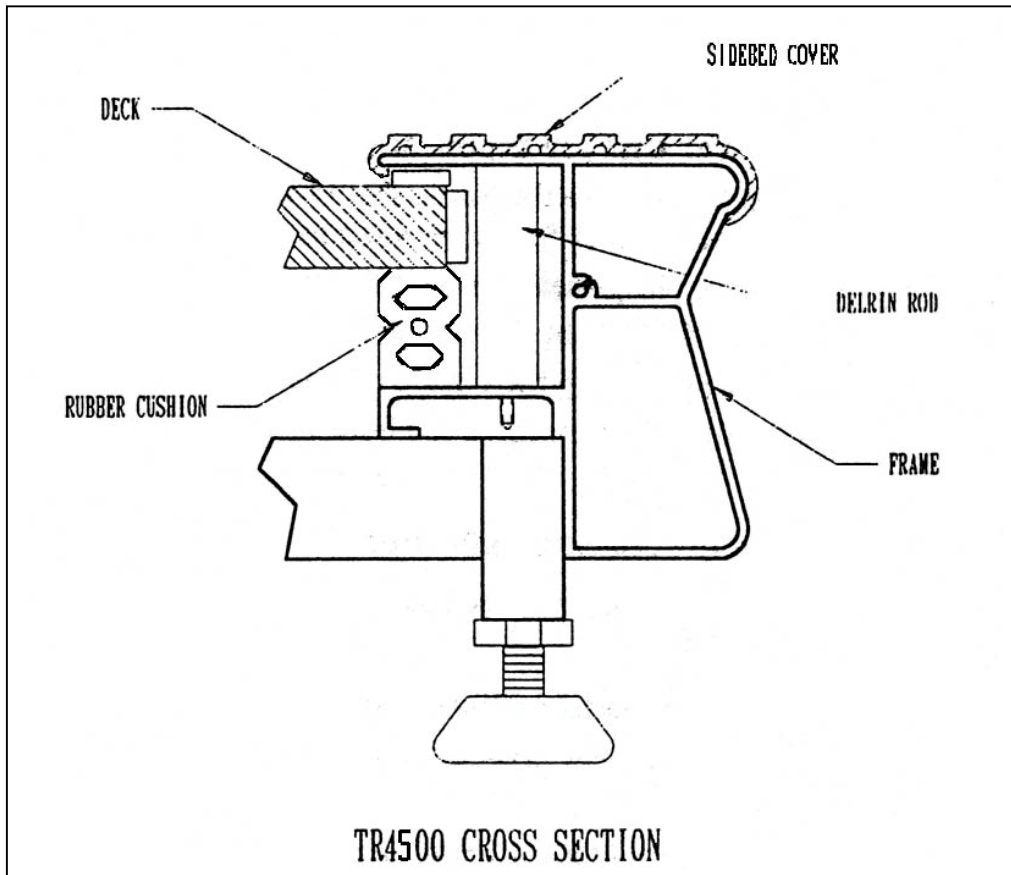
To replace the cover, proceed as follows:

1. To be sure that you have the correct cover (right or left), position it so that the wider flange is at the outside edge of the frame. The hole in the cover should be located nearer the front end of the treadmill.
2. Position the new cover so that the hole is nearest the front of the treadmill. If it is a left-hand cover, be sure to position the front end first, fitting the inner flange to clear the running belt pulley.
3. Move the cover parallel to the frame and hook the inner flange over the frame.

Side Bed Cover Replacement

4. At the front end, pull the outer flange over the frame, then use your hand or a soft mallet to “pop” the outer flange over the frame along its full length. The rear end of the cover should butt against the end cap. **See Diagram C.**

Diagram C



5. If the rear end of the cover does not meet the end cap, set a short section of wooden board against the front end of the cover, then tap the board with a plastic hammer to slide the cover flush against the end cap.
6. Lift the vertical section of the handrail to clear the new side bed cover, then set it carefully into the hole in the side bed cover. Be careful not to scratch the side bed cover.
7. Screw the 5/8-inch hex head screw through the bottom of the frame and into the bottom of the vertical section of the handrail, and tighten.

This completes side bed cover replacement procedures.